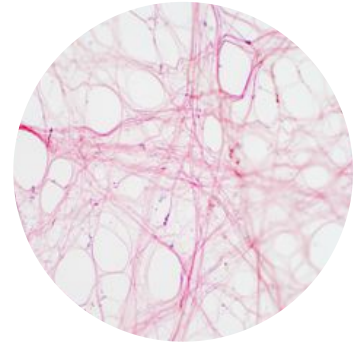


## Druggable Targets and Materials to Enable Soft Connective Tissue Repair

This campaign has been commissioned by an international Japanese pharmaceutical company who combat diseases with a combination of ground-breaking technology and biology, with an extensive track record of academic collaboration. They are seeking a solution that enables **connective soft tissue repair**, via either **structural materials** or **druggable targets**.



### Specific Points of Interest:

- Therapeutic target activating, recruiting or proliferating endogenous MSCs/ progenitor cells
- Injectable glue or filler to enable soft connective tissue repair, especially meniscus and intervertebral disc
- Mammalian animal models with defects or degeneration in meniscus and intervertebral discs that mimic human pathology

If possible, a combination of the above is preferable.

### Out of Scope:

- Cell therapy
- Non-patentable scaffolds (e.g. collagen, hyaluronic acid, PEG)
- Immune-mediated disease-related research, such as animal models of adjuvant induced arthritis or collagen type II-induced arthritis are not of interest
- Research focused on muscle, skin, fibrous tissues and fat are not within scope






### Stage of Development:

Ideally submitted solutions will be at the basic research, pre-clinical or late pre-clinical stages.

### Submission Information:

Submission of one-page summaries of Research Projects, Technology Briefs, Academic Profiles, Centres of Excellence and Spin-Outs are encouraged. Alternatively, please fill out an application form available [here](#).

### Opportunities sought

-  Technologies
-  Academics and expertise
-  Centres of excellence
-  Research projects
-  Spinout companies

### Submissions

Please submit relevant, non-confidential opportunities online via: [discover.in-part.com](https://discover.in-part.com)

Deadline: **7th December 2020 - 11:59 pm GMT**

#### Have any questions?

Contact our team at [discover@in-part.co.uk](mailto:discover@in-part.co.uk)